

This file was downloaded from BI Brage,
the institutional repository (open access) at BI Norwegian Business School

<http://brage.bibsys.no/bi>

Revenue scarcity and government outsourcing: Empirical evidence from Norwegian local governments

Benny Geys
BI Norwegian Business School

Rune Sørensen
BI Norwegian Business School

This is the accepted, refereed and final manuscript to the article published in

Public Administration, 94(2016)3, 769-788

Publisher's version available at <http://dx.doi.org/10.1111/padm.12262>

Copyright policy of Wiley, the publisher of this journal:

Authors are permitted to self-archive the peer-reviewed (but not final) version of a contribution on the contributor's personal website, in the contributor's institutional repository or archive, subject to an embargo period of 24 months for social science and humanities (SSH) journals and 12 months for scientific, technical, and medical (STM) journals following publication of the final contribution.

<http://olabout.wiley.com/WileyCDA/Section/id-817011.html>

Revenue scarcity and government outsourcing: Empirical evidence from Norwegian local governments*

Abstract

It is often said that “*necessity is the mother of invention*”. In this article, we assess whether this applies also to the design of public authorities’ service provision. Particularly, we evaluate whether revenue scarcity – as an indicator of fiscal stress – induces government outsourcing. In contrast to previous studies, we exploit arguably exogenous variation in local government revenue across time and space to derive stronger inferences on the role of revenue scarcity for outsourcing. Using data from Norwegian local governments covering the period 1995-2012, our main results indicate that a decrease in local government revenues is linked to more outsourcing of both infrastructure and support services.

Key words: Fiscal stress, Outsourcing, Public good provision, Local government, Contracting, Privatization.

Word Count: 7787 words (excl. appendix)

* The authors are grateful to the editor, three anonymous referees and ... (ANONYMIZED)

Introduction

An enduring debate in public administration concerns the institutional design of (local) government service provision. In principle, several options are available to public authorities – ranging from in-house provision, over contracting-out to public- or private-sector providers (i.e. outsourcing) to full-scale privatization. This range of alternatives raises two important questions. First, which form of service provision provides the ‘best’ outcomes in terms of, for instance, cost or production-technical efficiency, service effectiveness and service quality (for an early review, see Domberger and Jensen, 1997)? Second, what determines who chooses which form of service provision (for an early review, see Boyne, 1998)? Our study concentrates on the latter question, and thus aims to help elucidate why certain jurisdictions turn to outsourcing, while others do not.

More specifically, we concentrate on the potential role of revenue scarcity – or fiscal stress – for the decision to outsource service provision. Early observers often view fiscal stress as a key driver behind outsourcing and privatization decisions (Moore, 1987; Miranda, 1992; Boyne, 1998). It is currently gaining increased attention again due to the fiscal crisis in many Western countries, which “intensifies the need for local governments to rethink service delivery” (Bel and Warner, 2015: 52). Several theoretical arguments have been brought forward for such a potential revenue-outsourcing relation. A first line of argument focuses on a simple production cost argument: affluent governments can offer more and better in-house service provision compared to low-revenue authorities, and thus are less likely to rely – or, possibly, forced to rely – on alternative provision systems (Moore, 1987). Reversely, governments suffering “financial strains due to softening revenues” may be particularly likely to “feel pressure to cut back and possibly jettison noncore functions as a way to deal with the problem” (Lamothe and Lamothe, 2015: 3).

Another line of argument focuses on political costs and benefits, and highlights that outsourcing might offer increased governance flexibility by acting as a “budgetary buffer” (Pallesen, 2006: 39). When service provision is contracted out, the political and administrative costs of adjusting service levels are smaller. In line with such reasoning, recent evidence suggests that local governments are more likely to shed services that have been outsourced to external suppliers in the recent past (Lamothe and Lamothe, 2015). Finally, a third line of argument builds on a transaction cost perspective (Williamson, 1981, 1996), which maintains that public service providers will choose

governance structures minimizing the transaction costs (e.g., costs of negotiating and contracting) involved in obtaining a desired service level. In such a framework, cost pressures make it more likely that the value assigned to a reduction in short-term costs via outsourcing will outweigh concerns about any contracting costs linked to outsourcing (Williamson, 1996; Klaas et al., 1999).

Overall, therefore, financial difficulties faced by local governments may increase the appeal of outsourcing and privatization options. Yet, while indicators of fiscal stress constitute among the most frequently considered variables in outsourcing or privatization studies (Ferris, 1986; Warner and Hebdon, 2001; Bakker, 2002; Pallesen, 2004; Brudney *et al.*, 2005; Bhatti *et al.*, 2009; Zullo, 2009; Gonzalez-Gomez *et al.*, 2011; Rho, 2013), empirical results in this literature have thus far remained inconclusive at best (for reviews, see Boyne, 1998; Bel and Fageda, 2007, 2009). Moreover, foregoing work has been criticized for failing to account for the “reciprocal relationships between contracting out and the explanatory variables” (Boyne, 1998: 150) and the “dynamic nature” of the outsourcing/privatization decision (Bel and Fageda, 2007: 517). As such, inferences drawn from existing empirical studies remain exceedingly fragile, and at best reflect a (possibly spurious) correlation between fiscal stress and outsourcing rather than a *causal* connection.

Our main contributions relate to tackling these two empirical deficiencies in foregoing studies. First, we have access to unique panel data, which cover six surveys on the institutional design of local public authorities’ service provision collected in consistent four-year intervals among Norwegian municipalities over the period 1996-2012 (with an additional initial survey fielded in 1995). Hence, we can study changes over time and space in revenue scarcity and outsourcing to more accurately capture the move from public to private, or vice versa. It should be noted here that several recent studies have likewise made use of panel data (Pallesen, 2004; Bhatti *et al.* 2009; Zullo, 2009; Gonzalez-Gomez *et al.*, 2011; Hefetz and Warner, 2012; Gonzalez-Gomez *et al.*, 2011; Sundell and Lapuente, 2012; Rho, 2013). Nonetheless, these often still rely on pooled OLS regressions that effectively exploit only the cross-sectional variation in the data, and thus ignore the information provided by any existing temporal variation (e.g., Pallesen, 2004; Bhatti *et al.* 2009; Sundell and Lapuente, 2012).

Second, and crucially, our analysis can exploit variation in local government revenue scarcity outside the direct control of local governments to provide a more credible identification of the true revenue-outsourcing relation. This is important because, as mentioned, any decision to engage in outsourcing naturally also affects the level of government expenditures and, therefore, revenue requirements (Boyne, 1998). Ignoring this joint determination of revenues and outsourcing generates spurious results in the sense that the estimated correlation between both variables is likely to be inconsistent (i.e. it will not reflect the true population parameter). In contrast, and following Hægeland *et al.* (2012), Andersen *et al.* (2014) and Borge *et al.* (2015), our approach builds on the fact that many Norwegian municipalities derive significant revenue streams from the presence of hydropower plants within their boundaries. These revenues – which can amount to a substantial share of the local budget – are independent of local government decision-making since all hydropower stations were constructed in the period 1950-1990 (i.e. prior to the period analyzed here), their location depends on the presence of mountainous terrain (which is beyond municipal control), and municipalities in practice never adjust the commercial property tax rate levied on hydropower plants (i.e. all set the maximum rate allowed by the national government) (more details below). Hence, using this source of revenue variation allows stronger inferences regarding the revenue effects on outsourcing decisions.¹

Institutional setting and data

Norway has a three-tier governance system comprising a central government, 19 county governments and 434 municipalities. The current study uses data on the municipalities, which we also refer to as ‘local’ governments. Local government revenue in Norway amounts to about 18 percent of GDP, with employment in the local government sector accounting for about 20 percent of total employment.

Norwegian municipalities face a number of statutory obligations, including entitlement legislation for welfare services and legal requirements for the delivery of infrastructure services. As such, the

¹ Hægeland *et al.* (2012) use the same exogenous variation in Norwegian local government revenues to identify effects of school resources on pupil achievement. Andersen *et al.* (2014) employ it to illustrate that voter turnout increases with the financial stakes of the election as predicted by rational voter models (Geys, 2006a,b; Cancela and Geys, 2016). Finally, Borge *et al.* (2015) use it to show that reduced fiscal stress is linked to lower levels of cost efficiency in local service production.

large local government sector delivers welfare services including child care, primary and lower secondary education, primary health care and care for the elderly, and is responsible for various infrastructure services including water supply, sewage, garbage collection and disposal, and electricity distribution. Crucially, however, Norwegian municipalities face few regulations on the *type* of service delivery. They are therefore free to deliver services via traditional in-house provision, municipal agencies or companies owned by local government, via outsourcing or via private companies or non-profit organizations. This creates substantial variation in the institutional design of Norwegian public authorities' service provision, which provides an ideal situation to assess the role of fiscal stress on such service delivery choices.

Fiscal stress may not be commonly associated with Norway, which is known for having a good financial situation and a big and generous universal welfare state. Yet, though Norway has seen favorable rates of economic growth over the period analyzed here, the local government sector has not seen a parallel increase in revenues.² In particular, the municipal sector has witnessed significant fiscal deficits, which is mostly due to a high level of gross investment linked to large-scale investment programs initiated by the central government. Reforms include action plans to improve old age care, changing the start for schooling from the age of seven to six and the implementation of a new curriculum, and the construction of additional kindergartens to offer all children public day care facilities. A few key financial indicators for municipal government can illustrate the situation. The *Statistical Reports Committee for county and municipal government finance* recommends that municipalities operate a current surplus of about 3 per cent, relative to gross revenues.³ However, data from Statistics Norway show that this benchmark was attained in only one year in the preceding decade.⁴ Moreover, while in 2001 long-term debts accounted for about 60 per cent of gross revenues, it increased to an average of 190 per cent of revenues in 2012.

² For example, in the period 1990-2016, real GDP growth for mainland Norway (excluding revenues from the petroleum sector) amounts to an annual average of 2.9 per cent. The corresponding number of real revenue growth in the local government sector was 2.3 per cent. For further documentation, see the 2014 (May) report of the *Statistical Reports Committee for county and municipal government finance*, table 2.1.

³ For additional documentation, see <https://www.regjeringen.no/en/dep/kmd/organisation/styret-rad-og-utvalg/The-Statistical-Reports-Committee-for-county-and-municipal-government-finance-/id449207/>

⁴ The numbers are taken from the reporting system KOSTRA, available through Statistics Norway, see <https://www.ssb.no/statistikkbanken/selecttable/hovedtabellHjem.asp?KortNavnWeb=kommregnko&CMSSubjectArea=offentlig-sektor&PLanguage=1&checked=true>

Municipal revenues

Municipal revenues in Norway comprise income from three main sources: tax revenue, government grants and user charges. Most tax revenues derive from a proportional income tax, for which the rate is capped by the central government. All municipalities employ the maximum allowed rate in the period analyzed here. The main grant received by Norwegian local authorities is a general-purpose block grant based on fixed criteria (including population size, age structure and settlement pattern). Part of this block grant is a per capita subsidy designed to equalize revenues across municipalities ('revenue equalization'), while another component compensates municipalities for external factors that influence production costs ('expenditure equalization'). The central government also allocates a number of earmarked grants, which account for about 13 percent of total revenues. For example, municipalities receive such grants in to cover the costs of resettlement of refugees and asylum seekers. Finally, user charges are important in kindergartens, nursing homes and for infrastructure services (e.g., water supply, sewage, garbage collection and disposal, electricity distribution). They account for about 12 percent of total revenues.

The sum of income tax revenues and block grants is commonly denoted as 'free revenues'. They account for about 70 percent of total local government revenues, and constitute our central revenue variable in the empirical analysis. We thus explicitly exclude earmarked grants and user charges from our operationalization of municipal revenues. The reason is that municipalities can set the levels of user charges fully independently (subject to fee revenue not being larger than production costs), whereas revenues from earmarked grants depend at least in part on decisions made by the local government (e.g. the number of asylum seekers it receives). As such, both revenue sources are directly determined by local decisions, and thus subject to the joint-determination problem raised in the introduction (Boyne, 1998). To avoid spurious inferences arising from such endogenous revenue sources, they are excluded from the analysis.

Hydropower revenues

Many Norwegian municipalities receive a substantial share of their revenues from hydroelectric power plants and related facilities. Following Hægeland *et al.* (2012), Andersen *et al.* (2014) and Borge *et al.* (2015), we argue that revenues from hydropower plants represent an important source of revenue variation that is largely outside the control of local governments – and can therefore

serve as a credible basis for strengthening the inferences obtained in our analysis (more details below). This proposition rests on the observation that hydropower revenues consist of two main parts, neither of which are under the (direct or indirect) control of local governments.

A first part of hydropower revenues derives from a tax on commercial property, for which local governments are allowed to set a tax rate between 0.2% and 0.7% of the asset value. In practice, however, *all* municipalities with a hydropower plant levy the maximum tax rate of 0.7%, and they cannot affect the taxed asset values. Consequently, the actual revenues in any given year from this tax are *de facto* independent of local governments' decision-making. The second part of municipalities' hydropower revenues largely derives from the sale of electricity.⁵ Municipalities with large hydropower plants (i.e. over 4,000 natural horsepower) are entitled to use up to 10 per cent of the generated electric power at production costs. Since these production costs are substantially below the market price, municipalities generally put the entire licensed production up for sale. As neither the produced quantity (determined by the facilities' owners)⁶, nor the sales price (set by the market for electricity) can be influenced by the municipalities, sales revenues in any given year are *de facto* independent of local governments' decision-making. They will in effect be largely driven by variations in the level of precipitation and market prices (Borge *et al.*, 2015). Finally, it should be noted that hydropower revenues are only available where proximity to mountains and waterfalls have facilitated the construction of water reservoirs, which are crucial for the continuous and efficient functioning of hydropower plants. Municipalities thus cannot influence the *de facto* location of hydropower plants, or make sure they are constructed within their jurisdiction.⁷

Table 1 shows summary statistics for municipalities' free and hydropower revenues (measured per capita, in current prices; Panel I) and illustrates the substantial variation over time and space in hydropower revenues (Panel II). Panel I indicates that hydropower revenues on average constitute

⁵ Municipalities can also receive license fees, whose revenues are included in our concept of hydroelectric revenues.

⁶ Central government, urban municipalities, county governments and private companies own most power plants. The municipalities where the power plants are located very rarely own the facilities. Consequently, these municipalities have little direct influence over these facilities' production decisions.

⁷ For further documentation on institutional framework and production capacity of the Norwegian hydropower system, see "Facts 2013, Energy and water resources in Norway" (Norwegian Ministry of Petroleum and Energy; https://www.regjeringen.no/globalassets/upload/oed/faktaheftet/facts_energy_water.pdf).

approximately 3-5% of free revenues, and that the predominant share of these revenues derives from commercial property tax revenues. Panel II highlights the substantial variation in hydropower revenues across Norwegian municipalities and over time within municipalities. Substantial variation over time is illustrated by the fact that inter-temporal changes in hydropower revenues *within* municipalities range from -21% to +38% (see bottom row of panel II). The ‘between’ row of panel II specifies that while some municipalities on average have no hydropower revenues over the period 1995-2012, others on average obtain about 50% of their revenues from this source. This cross-sectional variation is also illustrated in the map provided in figure B4 in appendix B. Confirming the importance of mountainous terrain for obtaining hydropower revenues, this figure also shows that municipalities with large hydropower revenues tend to be concentrated in the mountainous areas in the center of southern Norway and central Norway.

TABLE 1 ABOUT HERE

Public authorities’ service provision

Similar to other countries, outsourcing of service provision is an intensely debated topic in election campaigns in Norway, particularly during local elections. Left-wing parties and public sector unions – which retain strong institutional and ideological links in Norway – generally remain highly skeptical towards outsourcing, and view it as a strategy to privatize public service provision. A common claim thereby is that outsourcing is a ‘management fad’, yielding few or no real cost savings or other benefits while weakening political control over service provision. The parties on the right have historically been more favorable towards outsourcing, and have stressed the economic and efficiency gains that can be expected of such reforms. Echoing the proponents of New Public Management, they underscore the governments’ role as provider of services, though not necessarily as producer. Interestingly, potential cost savings remain an important motive in the outsourcing discussion across partisan divisions. As outlined above, we seek to identify whether fiscal austerity is a main driver of the outsourcing decision in the data, which would signify that local politicians and administrators believe it is a useful and credible way to reduce costs.

Data on the institutional design of Norwegian public authorities’ service provision – and thus the level of outsourcing among local governments – derive from a series of surveys collected by the

Norwegian Institute for Urban and Regional Research (NIBR) on behalf of the Ministry of Local Government and Modernization. The survey data include information on organizational patterns, and comparable data have been collected in 1995, 1996, 2000, 2004, 2008 and 2012. The response rates to these surveys were consistently very high (1995: 75%; 1996: 85%; 2000: 86%; 2004: 80%; 2008: 79%; 2012: 82%), which gives high validity to our dataset and allows us to generalize the findings to the entire population of Norwegian municipalities. The datasets and additional documentation are available through the Ministry's homepage (in Norwegian) on <http://www.nsd.uib.no/nsddata/serier/kommunalorganisering.html>.

Information on the level of outsourcing in any given municipality derives from a question on organizational choices. The 2008 and 2012 waves of the survey thereby applied the following formulation: "How does the local government currently provide its services? The municipality can perform its responsibilities singlehandedly, it can cooperate with other municipalities, or it can purchase the services from outside providers. The same service can be provided in multiple ways. Please state how the municipality manage its responsibilities in the following sectors." The respondents were then asked to indicate the extent to which service provision occurred along a number of possible organizational forms (i.e. in-house, provision via a government-owned corporation, provision via a private corporation, and so on) on a scale from 0% to 100%. As the first waves of the survey collected less detailed responses,⁸ we apply a consistent recoding of the original survey data throughout the analysis.

In effect, we experimented with a number of different operationalizations, which is important to allow assessing the robustness of our results to the exact choices made at this point. In a first approach, we code in-house provision as 0, provision via a government-owned corporation as 0.5, and provision via a private corporation as 1, for each service sector available in the original survey data. The 0.5 coding of government-owned corporations thereby reflects that this constitutes an intermediate stage where the local government retains significant direct influence over actual

⁸ The 2004 formulation is largely equivalent to that employed in 2008 and 2012, but includes an additional initial question about the existence of inter-municipal cooperation in the provision of a given service. The question formulation in the 1995, 1996 and 2000 surveys is less detailed, and simply asks: "How does the local government currently provide the majority of its service provision in the following sectors". Answers are recorded via a set of indicator variables equal to 1 if the *majority* of the service is provided in-house, via a government-owned corporation, via a private corporation, and so on.

service provision decisions. However, since such a 0 – 0.5 – 1 scale arguably imposes a very specific relation between the three outsourcing options, a second approach simply separates in-house provision from any form of outsourcing (i.e. a 0 – 1 dichotomy). What matters most under this alternative operationalization is that some degree of outsourcing takes place, whereas the exact form this outsourcing takes becomes irrelevant.⁹

For both operationalizations of the outsourcing decision discussed above, our analysis concentrates on eight services that have been included in most of the surveys on municipalities' organizational choices between 1995 and 2012. These services cover garbage collection, sewage, water supply, firefighting, road maintenance, laundry, cleaning and catering.¹⁰ Again, we take two approaches to analyze these various services. On the one hand, we evaluate outsourcing decisions for each service area independently. On the other hand, we experimented with calculating the share of services that is outsourced across the five 'infrastructure' services (i.e. garbage collection, sewage, water supply, firefighting and road maintenance) and the three 'support' services (i.e. laundry, cleaning and catering) per municipality and per survey year. This results in an outsourcing score between 0 and 1, where higher numbers indicate of more extensive use of outsourcing within a given service area.

⁹ Norwegian municipalities often use a combination of in-house and external delivery for a given service. Unfortunately, information about the exact combinations employed is difficult to quantify consistently over the period of analysis since the presentation of this information has changed extensively over subsequent survey waves. This is the main reason why we choose to focus on whether municipalities engage in at least some positive amount of outsourcing in a given service. This can be consistently coded over the entire period. Note also that our data unfortunately do not allow us to run separate analyses for different types of outsourcing. Yet, there are clearly good reasons to believe that the main drivers of outsourcing decisions may differ depending on whether it concerns outsourcing to municipal company, to a foundation, to inter-municipal arrangements and cooperation, to non-profit civil society organizations and to for profit private businesses. Both elements appear important avenues for future research in this field.

¹⁰ Clearly, this leaves aside other important policy areas such as welfare services. The main reason is that outsourcing plays a minor role in the supply of the main welfare services in Norway. Local governments own and operate nearly all primary and lower secondary schools. Only a handful of municipalities (all in urban areas) provide nursing institutions for the elderly, whereas some local governments have established inter-municipal companies to provide emergency health and child custody services. Child-care services (kindergartens) are the only major welfare service with a significant amount of private provision alongside public-sector provision. Private companies, non-profit organizations and groups of families have established a significant number of private day care centers. Statistics indeed show that the share of children attending non-municipal kindergartens was about 42 per cent in 1992, increasing to about 47 per cent in 2012. Nevertheless, these services are *not* contracted out from the public household, since private kindergartens are mostly publicly funded. Specifically, the central government subsidizes private day care centers via a matching grant that is allocated via local governments, and which aims to equalize the fiscal framework of municipal and non-municipal providers. This implies that municipalities cannot obtain cost savings by outsourcing childcare services, such that the politics of outsourcing on infrastructure and support services will be different from the politics of outsourcing of welfare services in our setting. For further documentation see <https://www.regjeringen.no/en/topics/families-and-children/kindergarten/innsikt/finansiering-av-barnehager/id2344788/>.

In Table A1 in Appendix A, we present descriptive statistics for the outsourcing indicators, thereby including information on all eight services independently as well as the constructed index.¹¹

Our distinction between the various services and the individual-level analysis of each service type reflects the idea that “the type of service conditions local government decision-making” (Gonzalez-Gomez *et al.*, 2011: 475; Hefetz and Warner, 2012). The underlying argument is that public services differ in the “type and magnitude of their contractibility problems” (Andersson and Jordahl, 2011: 1), which directly affects the level of transaction costs involved in the outsourcing decision (Hefetz and Warner, 2012). That is, services with larger contractability issues – such as concerns over moral hazard, verifiability of service quality, contract enforcement and monitoring, and so on – may not only be less likely candidates for outsourcing as such, but the decision to engage in outsourcing with respect to such services may also be affected by different determinants. This line of reasoning closely resembles the importance awarded to transaction costs in the theory of the firm in industrial organization (Coase, 1937; Williamson, 1981, 1996). Moreover, the requirements for “specific physical infrastructure or technical expertise” may differ across service areas (Hefetz and Warner, 2012: 292), which might again affect the make-or-buy decision.

Empirical analysis

Estimation model and methodological issues

The estimation model used to analyze the revenue-outsourcing relation takes the following basic form (with subscripts i and t referring to municipalities and years, respectively):

$$Y_{i,t} = \beta Revenue_{i,t} + Controls_{i,t} + \alpha_i + \delta_t + e_{i,t} \quad (1)$$

In equation (1), $Y_{i,t}$ represents a set of dependent variables representing the level of outsourcing in municipality i at time t (using the different operationalizations discussed in the previous section). Our key independent variable – $Revenue_{i,t}$ – is operationalized as the natural logarithm of free

¹¹ Somewhat surprisingly given the extent of NPM-inspired reforms, table A1 indicates that the level of outsourcing in infrastructure services declines over time. That is, more municipalities are tending towards in-house provision of infrastructure services in the later years. One potential explanation might be the time period of our analysis. NPM reforms were at their peak in Norway in the 1980s and 1990s, and many people became much more critical of this development in the new millennium – at least with respect to what might be considered ‘core services’ of the local governments.

municipal revenues plus hydropower revenues in year t (defined as income and property tax revenues, block grants and hydropower revenues per capita). Clearly, local governments are better off when experiencing higher revenues, and can be expected to suffer “financial strains due to softening revenues” (Lamothe and Lamothe, 2015: 3). As such, we expect $\beta < 0$.¹²

Our set of control variables ($Controls_{i,t}$ in equation (1)) include measures for population size, settlement pattern (measured as the share of population residing in sparsely populated areas), age structure¹³ (operationalized as the share of inhabitants between 0 and 5 years, 6-15 years, and over 67 years), the local unemployment rate and the ideological leaning of the local government (operationalized as the vote share of right-wing political parties in the most recent municipal election). The demographic statistics derive from the Norwegian Social Science Data Services, and are organized by Fiva et al. (2012). Population size is included as a control variable since it was established as an important determinant of privatization decisions by, among others, Gonzalez-Gomez *et al.* (2011). Similarly, ideological factors have attracted much attention in the privatization and outsourcing literatures (Ferris, 1986; Boyne, 1998; Warner and Hebdon, 2001; Sundell and Lapuente, 2012; Elinder and Jordahl, 2013; Lamothe and Lamothe, 2015). We include the ideological composition of the local council here as well to assess whether outsourcing has “entered a new, less ideological phase” also in Norwegian local government (Brudney *et al.*, 2005: 393).¹⁴ We present descriptive statistics for the control variables in Table A2 in Appendix A.

Two methodological issues are important when estimating equation (1). First, we exploit panel data covering six survey waves (1995, 1996, 2000, 2004, 2008 and 2012), which means that the same municipality has been observed at repeated points in time. Since revenue levels are relatively stable

¹² Although we use contemporaneous municipal revenues throughout the analysis below, all results remain qualitative similar when using lagged revenues (details upon request).

¹³ The share of children (0-5 years) was coded 0 to 6 years for the period up to 1996, and 0 to 5 years in the subsequent period. Similarly, share of children in school age (6-15 years) was coded 7-15 years in the same period. This is due to the 1997 school reform, which lowered the age when children entered schooling from 7 to 6 years.

¹⁴ As the ideological composition of the local government might be deemed endogenous to the municipality’s financial situation – e.g., because voters may take information on fiscal variables into account on Election Day (Geys and Vermeir, 2008a,b) – we also replicated the analysis without this variable. All results reported below are unaffected, and we report the results including ideology to acknowledge the importance it has been given in previous work. Furthermore, we also experimented with extensions of the baseline model including region fixed effects. Such specification essentially compares the outsourcing decisions of neighboring authorities facing different revenue levels, and thus directly accounts for possible local ‘trends’ in outsourcing decisions. Inclusion of such region fixed effects leaves all inferences drawn below unaffected (details upon request).

over time, our baseline model specification employs random effects for municipalities. This approach allows exploiting variation within and across municipalities. Moreover, we estimate the regression models with cluster- and heteroscedasticity-robust standard errors. Second, a central concern regarding our key independent variable – $Revenue_{i,t}$ – is that it may be endogenous. While we focus on revenues that are largely beyond the influence of local authorities (see above), we still cannot exclude that any decision to engage in outsourcing also affects the level of municipal expenditures (and, therefore, revenue requirements) (Boyne, 1998). To accommodate this endogeneity concern and achieve a stronger identification of the revenue-outsourcing relation, we rely on an instrumental variables (IV) technique.

Importantly, the validity of any IV estimation depends on the selection of appropriate instruments, since inappropriate instruments lead to inconsistent coefficient estimates and therefore cannot teach us anything about the relations of interest (Heckman, 2000; Deaton, 2010). The central assumptions underlying valid IV analysis are that the instrument is ‘external’ to the analysis at hand – in the sense that it is “not set of caused by the variables in the model” (Deaton, 2010: 430) – it should only affect the outcome of interest through its effect on the relevant explanatory variable (the exclusion restriction), and it should be a sufficiently strong predictor of the relevant explanatory variable (no weak instrument problem). In the main part of the analysis, the revenue variable in our model will be instrumented with hydropower-related municipal revenues (i.e. revenues obtained from the commercial property tax and the sale of electricity; see above). Below, we will show that hydropower revenues are strongly related to revenues, and we thus do not suffer from a weak instrument problem. We will also demonstrate that hydropower revenues display idiosyncratic variation mostly related to mountainous terrain, which implies that the instrument is external to local government decisions. Nonetheless, this instrument might arguably fall short in terms of satisfying the exclusion restriction, since it is hard to *a priori* exclude *any* direct influence of such revenues on outsourcing decisions. Hence, we also provide results using an alternative set of geographical instruments (i.e. share of area above 600-899 meters, 900-1199 meters and 1200 meters of higher).¹⁵ These are likewise external (because municipalities cannot influence their geographical location) and directly linked to hydropower revenues (see Figure B2 in Appendix B), but are also more credibly exogenous in the econometric sense since geography is unlikely to be

¹⁵ We employ the same geographical indicators as Andersen et al. (2014) (table 4).

correlated with the error term in the main analysis (thus satisfying the exclusion restriction). The resulting IV estimates give a stronger indication of causality compared to OLS estimates, given the assumptions invoked. Finally, we will show that a formal Hausman test comparing the OLS estimates and the IV estimates confirms that IV estimation is preferred to the (biased) OLS estimates.

Main results

Our baseline regression results using the aggregated outsourcing score across five ‘infrastructure’ services (i.e. garbage collection, sewage, water supply, firefighting and road maintenance) and three ‘support’ services (i.e. laundry, cleaning and catering) are summarized in table 2. Equivalent results for each of the eight individual services are provided in figure 1.¹⁶ In both cases, we provide two main sets of results, which are distinguished by our treatment of the central independent variable ($Revenue_{i,t}$). That is, in panel I of table 2 and the left-hand panel of figure 1, we ignore its potential endogeneity and estimate a set of standard linear panel regression models (referred to as ‘OLS estimates’). In panel II of table 2 and the right-hand panel of figure 1, however, we accommodate its potential endogeneity via an Instrumental Variables approach using hydropower revenues as the instrument (referred to as ‘IV estimates’). Columns I and III in table 2 present a model without control variables and municipality-specific random effects, while these are included in columns II and IV (as indicated in the bottom row of table 2). To preserve space, figure 1 only reports results when including control variables and municipality-specific random effects. The key variable of interest throughout all models is *Revenues*, which estimates the relation between municipal revenues and outsourcing in infrastructure and supporting services. Note, however, that panel II in table 2 also presents the estimated relation between municipal revenues and hydropower revenues (i.e. *First stage estimates*) used to generate the predicted values of *Revenues* in the Instrumental Variables model.

TABLE 2 ABOUT HERE

FIGURE 1 ABOUT HERE

¹⁶ The results in table 1 and figure 1 employ the 0 – 1 dichotomy separating in-house provision from any form of outsourcing. Nonetheless, similar results are obtained when using a 0 – 0.5 – 1 scale to operationalize the three outsourcing options (detail upon request).

The results in panel I of table 2 indicate that municipal revenues and outsourcing are negatively correlated – in line with theoretical arguments suggesting that fiscal stress increases the appeal of outsourcing options (Ferris, 1986; Boyne, 1998; Brudney *et al.*, 2005; Bhatti *et al.*, 2009; Zullo, 2009; Gonzalez-Gomez *et al.*, 2011). Though the OLS regressions yield negative estimates in all specifications, they are not statistically significant at conventional levels. Panel II of table 2 presents IV-estimates using hydropower revenues as the instrument. The first stage results suggest that hydropower revenues are indeed an important source of revenue variation, which underlines their validity as instruments in our analysis (see also Figure B2 in Appendix B for further details). The small standard errors in the first stage regression lead to relatively high F-test statistics (well above 10), which shows that weak instruments are not a concern.

The key estimates in Panel II indicate considerably larger negative effects of revenues on the outsourcing decision. The negative revenue-outsourcing relation is always statistically significant at the 95% confidence level or better. This finding arises both for infrastructure and support services. In terms of effect size, a one standard deviation in revenues (0.43 measured on the logarithmic scale) implies that 0.18 infrastructure services will no longer be outsourced. A similar effects size is obtained also for support services. A shift from the 5th percentile in the revenue distribution (on average: 16.020 NOK per capita) to the 95th percentile (on average: 58.274 NOK per capita) is linked to a decrease in the level of outsourcing for both the infrastructure and support area by about 0.58 services. Consequently, if we consider the combined impact on infrastructure and support services, we would expect such a revenue increase to induce one additional service to be provided in-house.

In close analogue to the results reported in table 2, figure 1 indicates that the large majority of coefficient estimates for the eight individual services are negative. The OLS-estimates are again relatively small and mostly insignificant. However, once we account for the endogeneity of municipal revenues, all coefficient estimates are negative and statistically significant at conventional levels for all services except road maintenance, firefighting and (though only marginally) laundry services. Overall, table 2 and figure 1 thus provide clear evidence that revenue shocks indeed lead to changes in the level of outsourcing of Norwegian local governments.

Robustness checks

We subjected the results presented in table 2 to several robustness checks. First, all models have been re-estimated excluding seven municipalities with a total population size below 400 inhabitants or above 90.000 inhabitants. These seven municipalities are obvious outliers in terms of population size in the Norwegian landscape. Their exclusion does not affect the qualitative findings on the revenue-outsourcing relation reported above (details upon request), such that our results are not driven by the few extremely small or large Norwegian municipalities. Second, not all surveys include the exact same set of public services. Specifically, information for all infrastructure services included in our infrastructure index is only available for the 2004-2012 period, while the information for all support services included in our support index is complete for the 1995-2004 period. We have therefore re-estimated models I through VIII for the time periods allowing us to construct the outsourcing indices using a balanced set of public services. The estimates from these more restricted time periods are comparable to those presented in table 2 (details upon request).

Finally, to illustrate that our results are not merely an artefact of the empirical approach employed, we also estimated a series of ‘reduced-form’ regression models that include hydropower revenues directly as the central explanatory variable in equation (1). The detailed results are illustrated in figure B3 in appendix B, which has the same format as figure 1 for ease of interpretation. The results strongly corroborate the negative revenue-outsourcing relation even when using the random effects panel models. Although hydropower revenues are beyond local governments’ control, they might not be fully exogenous in an econometric sense (see above). Consequently, we experimented with an instrumental variables approach where terrain characteristics act as instrument variables for hydropower revenues (share of area above 600-899 meters, 900-1199 meters and 1200 meters or higher). The results again largely confirm the negative revenue-outsourcing relation. Still, as terrain characteristics clearly do not change over time, we lose some cross-temporal information in these estimates, which might explain the somewhat weaker results for support services in these models.

Conclusion

In this paper, we evaluated whether revenue scarcity – as an indicator of fiscal stress – induces government outsourcing. In contrast to previous studies, we exploit arguably exogenous variation

in local government revenues across both time and space deriving from the presence of hydropower plants within municipal boundaries, which allows stronger identification of revenue effects on outsourcing decisions (for a similar approach in different settings, see Hægeland *et al.*, 2012; Andersen *et al.*, 2014; Borge *et al.*, 2015). Evidently, since we do not trace the process of change in every single municipality, there is always the possibility that other changes and reforms in the same period are important to explain developments towards – or away from – outsourcing over time. Yet, by exploiting exogenous sources of variation in municipal revenues, we can attribute some changes in outsourcing to these revenue differences. This clearly does not imply that other elements do not matter for local governments' outsourcing decisions. Any observed effects in our analysis should thus best be viewed as existing independent of any such effects.

Our main findings indicate that financial strains due to a *decrease* in local government revenues indeed is associated with *more* outsourcing (and vice versa). Given the assumptions invoked in IV estimates, these findings provide a strong indication of causality compared to earlier work based on cross-sectional data or endogenous revenue sources. Municipalities collecting substantial revenues from hydropower facilities access this natural resource to maintain in-house service provision. There is only weak evidence that this finding differs across infrastructure and support services. Clearly, our analysis and identification strategy are specific to the Norwegian setting, which might induce concerns about the general nature of our results. Yet, our empirical approach allows us to infer much more about the underlying theoretical connection between fiscal stress and outsourcing relative to existing cross-sectional studies relying on endogenous revenue variables. This implies that our findings on the hypothesized revenue-outsourcing relation can be generalized to the theoretical level, although it clearly remains important to subject this proposition to further empirical scrutiny in other settings.

Our findings not only provide an important contribution to the literature on local-level outsourcing decisions, but gain additional relevance from recent findings linking government outsourcing decisions to the subsequent shedding of public services (Lamothe and Lamothe, 2015). Although these authors fail to find a direct effect of indicators of fiscal stress on the decision to stop service provision, our results suggest there may well be an important indirect effect. That is, to the extent that fiscal stress induce increased outsourcing, it may increase the likelihood that the service is

shed completely in the future (Lamothe and Lamothe, 2015). To improve our understanding of the *processes* driving who chooses which form of service provision (and why), the potential existence of such gradual, dynamic developments in the institutional framework of public authorities' service provision presents an important avenue for future research.

Finally, our analysis contributes to the methodological development of public administration research. Empirical studies in public administration could, in our opinion, benefit from a more explicit discussion of (the requirements required for assessing) causal effects. Public administration is a field where we both attempt to describe and understand patterns of institutional variation and change, and analyze how organizational shifts affect public policies. Much empirical evidence, however, relies on cross-sectional dataset or derives from correlating various responses obtained from survey questionnaires. Whether such analyses allow strong (causal) inferences is questionable, and we believe that causality issues should be addressed more carefully in future work. Indeed, greater awareness of – and transparency about – whether and when observed relationships are indeed causal, provides a way to learn more the relations of interest.

References

- Andersen, J.J., J.H. Fiva and G.J. Natvik. 2014. Voting When the Stakes are High. *Journal of Public Economics*, 110: 157-166.
- Andersson, F. and H. Jordahl. 2011. Outsourcing Public Services: Ownership, Competition, Quality and Contracting. *IFN Working Paper* nr. 874.
- Bakker, K. 1992. From State to Market? Water Mercantilization in Spain. *Environment and Planning A* 34(5): 769-790.
- Bel, G. and X. Fageda. 2007. Why do Local Governments Privatise Public Services? A Survey of Empirical Studies. *Local Government Studies* 33(4): 517-534.
- Bel, G. and X. Fageda. 2009. Factors Explaining Local Privatization: A Meta-Regression Analysis. *Public Choice* 139: 105-119.
- Bel, G. and M.E. Warner. 2015. Inter-municipal Cooperation and Costs: Expectations and Evidence. *Public Administration* 93(1): 52-67.
- Bhatti, Y., A. Leth Olsen and L. Holm Pedersen. 2009. The Effect of Administrative Professionals on Contracting Out. *Governance* 22(1): 212-137.
- Borge, L.-E., P. Parmer and R. Torvik. 2015. Local Natural Resource Curse. *Journal of Public Economics* 131: 101-114.
- Boyne, G.A. (1998). The determinants of variations in local service contracting: Garbage in, garbage out? *Urban Affairs Review* 34(1): 150-163.
- Brudney, J.L., S. Fernandez, J.E. Ryu and D.S. Wright. 2005. Exploring and Explaining Contracting Out: Patterns among the American States. *Journal of Public Administration Research and Theory* 15(3): 393-419.
- Cancela, J. and B. Geys. 2016. Explaining Voter Turnout: A Meta-Analysis of National and Subnational Elections. *Electoral Studies* forthcoming.
- Coase, R.H. 1937. The Nature of the Firm. *Economica* 4: 386-405.
- Deaton, A. 2010. Instruments, Randomization and Learning about Development. *Journal of Economic Literature* 48(June): 424-455.
- Domberger, S. and P. Jensen. 1997. Contracting Out by the Public Sector: Theory, Evidence and Prospects. *Oxford Review of Economic Policy* 13: 67-78.
- Elinder, M. and H. Jordahl. 2013. Political Preferences and Public Sector Outsourcing. *European Journal of Political Economy* 30: 43-57.
- Ferris, J. 1986. The Decision to Contract Out: An Empirical Analysis. *Urban Affairs Review*. 22(2): 289-311.
- Fiva, J.H., A. Halse and G.J. Natvik. 2012. Local government dataset. Available at www.jon.fiva.no/data.htm.
- Geys, B. 2006a. 'Rational' Theories of Voter Turnout: A Review, *Political Studies Review* 4(1): 16-35.
- Geys, B. 2006b. Explaining Voter Turnout: A Review of Aggregate-Level Research, *Electoral Studies* 25(4): 637-663.
- Geys B. and J. Vermeir. 2008a. Taxation and Presidential Approval: Separate Effects from Tax Burden and Tax Structure Turbulence? *Public Choice* 135(3-4): 301-317.

- Geys B. and J. Vermeir. 2008b. The Political Cost of Taxation: New Evidence from German Popularity Ratings. *Electoral Studies* 27(4): 633-648.
- Gonzalez-Gomez, F., A.J. Picazo-Tadeo and J. Guardiola. 2011. Why do Local Governments Privatize the Provision of Water Services? Empirical Evidence from Spain. *Public Administration* 89(2): 471-492.
- Heckman, J.J. 2000. Causal Parameters and Policy Analysis in Economics: A Twentieth Century Retrospective. *Quarterly Journal of Economics* 115(1): 45-97.
- Hefetz, A. and M.E. Warner. 2012. Contracting or Public Delivery? The Importance of Service, market, and management Characteristics. *Journal of Public Administration Research and Theory* 22(2): 289-317.
- Hægeland, T., O. Raaum, and K.G. Salvanes. 2012. Pennies from heaven? Using exogenous tax variation to identify effects of school resources on pupil achievement. *Economics of Education Review*, 31: 601-614.
- Klaas, B.S., J.M. Clendon and T.W. Gainey. 1999. HR Outsourcing and its Impact: The Role of Transaction Costs. *Personnel Psychology*, 52(1): 113-136.
- Lamothe, S. and M. Lamothe. 2015. Service Shedding in Local Government: Why do they do it? *Journal of Public Administration and Theory*. Forthcoming. Doi: 10.1093/jopart/muv012.
- Moore, S. 1987. Contracting Out: A Painless Alternative to the Budget Cutter's Knife. *Proceedings of the Academy of Political Science* 36(3): 60-73.
- Pallesen, T. 2004. A Political Perspective on Contracting Out: The Politics of Good Times. Experiences from Danish Local Governments. *Governance* 17(4): 573-587.
- Pallesen, T. 2006. The Politics of Contracting Out in School Districts: The Case of Washington State. *State and Local Government Review* 38: 34-40.
- Rho, E. 2013. Contracting Revisited: Determinants and Consequences of Contracting Out for Public Education Services. *Public Administration Review* 73(2): 327-337.
- Sundell, A. and V. Lapuente. 2012. Adam Smith or Machiavelli? Political Incentives for Contracting Out Local Public Services. *Public Choice* 153: 469-485.
- Warner, M.E. and R. Hebdon. 2001. Local Government Restructuring: Privatisation and its Alternatives. *Journal of Policy Analysis and Management* 20(2): 315-336.
- Williamson, O.E. 1981. The Economics of Organization: The Transaction Cost Approach. *American Journal of Sociology* 87(3): 548-577.
- Williamson, O.E. 1996. *The Mechanisms of Governance*. New York: Oxford University Press.
- Zullo, R. 2009. Does Fiscal Stress Induce Privatization? Correlates of Private and Intermunicipal Contracting, 1992-2002. *Governance* 22(3): 459-481.

Table 1: Municipal hydropower revenues

Panel I: Hydropower revenues					
Year	Free revenues	Hydropower revenues	Property taxes	Revenues from hydropower sales	(N)
	(1)	(2)	(3)	(4)	
1995	19.73	1.024	1.007	0.0167	(422)
1996	20.02	1.035	1.017	0.0183	(428)
2000	25.57	1.165	1.142	0.0226	(429)
2004	31.04	1.069	1.040	0.0296	(428)
2008	37.19	2.346	2.282	0.0585	(424)
2012	52.31	2.691	2.624	0.0657	(419)
Panel II: Hydropower revenue share					
	Mean	St.dev.	Min	Max	(N)
Overall	3.71	7.88	0	76.16	2502
Between		7.51	0	49.43	426
Within		2.45	-21.11	37.66	5.87

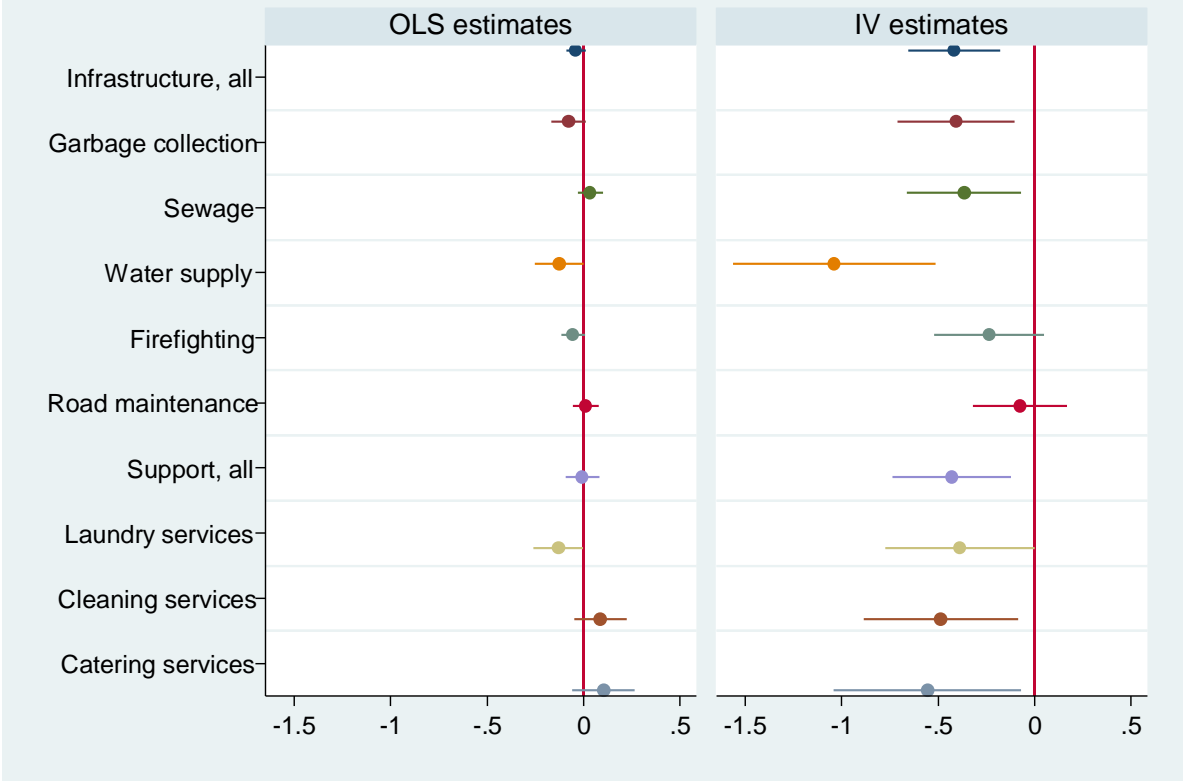
Note: Panel I presents four revenue indicators per capita in current prices. Free revenues (1) comprises income tax revenues, property tax revenues, central government block grants and hydropower revenues. Hydropower revenues (2) is the sum of commercial property taxes (3) and revenues from sales of licensed hydropower production (4). Data on total property tax revenues (i.e. the sum of residential and commercial taxes) are available for the entire period, while data for commercial property tax revenues are available only from 2007 onwards (see Fiva *et al.*, 2012). We therefore estimate the ratio of commercial property taxes in total property taxes based on data for 2010, and assume that the municipality-specific property tax ratio is constant over time (which allows us to estimate commercial property taxes for the entire period). Note that this assumption holds trivially for municipalities without (residential) property taxes, but appears credible also for municipalities with both types of property taxes since only few municipalities change the tax *rates* over time. Panel II illustrates the overall variation in the share of hydropower revenues for all municipalities and years ('overall'), and also decomposes the standard deviation into between and within components.

Table 2: Baseline regression results

	Infrastructure index		Supporting services index	
	Panel I: OLS estimates			
	I	II	III	IV
<i>Revenues (log)</i>	-0.074*** (0.020)	-0.040 (0.026)	-0.036 (0.027)	-0.0053 (0.044)
N (obs)	1777	1775	1701	1699
N (municipalities)	433	433	431	431
R-Squared:				
- Within	0.257	0.257	0.284	0.287
- Between	0.123	0.157	0.081	0.095
- Overall	0.206	0.217	0.199	0.209
	Panel II: IV estimates			
	V	VI	VII	VIII
<i>Revenues (log)</i>	-0.312*** (0.075)	-0.416*** (0.121)	-0.244*** (0.092)	-0.428*** (0.157)
<i>First stage estimates</i> [hydropower revenues (log)]	0.0256*** (0.0036)	0.0156*** (0.0024)	0.0259*** (0.0036)	0.0160*** (0.0024)
N (obs)	1743	1741	1671	1669
N (municipalities)	433	433	422	422
R-Squared:				
- Within	0.245	0.231	0.282	0.277
- Between	0.067	0.077	0.044	0.029
- Overall	0.158	0.159	0.172	0.159
<i>F-test statistic for weak instruments</i>	50.83	40.83	50.69	41.34
Covariates	No	Yes	No	Yes
Year fixed effects	Yes	Yes	Yes	Yes
Mun. random effects	No	Yes	No	Yes

Note: The table displays estimates for (log) municipal revenue on outsourcing in infrastructure and supporting services. The response variables are measured as average scores of the relevant sub-indexes that capture outsourcing in each service sector (see main text). The regression models include the following covariates: population size (log), settlement pattern, the age structure of the municipal population and share of electorate voting for the right-wing political parties. Panel I contains OLS estimates, whereas panel II displays IV estimates that employ hydropower revenues (per capita, log-scale) as instrument variable. The models include municipality random effects, and the standard errors are also clustered at the municipality level. *** statistically significant at 0.1%, ** at 1% and * at 5% (two-tailed tests).

Figure 1. The revenue impact on government outsourcing



Note: Coefficient estimates derive from the baseline regression model (1), and are presented with 95% confidence levels.

Appendix A: Descriptive statistics

Table A1. Descriptive statistics for local government outsourcing (Averages)

Panel I: Infrastructure services							
Year	Infrastructure services	Garbage collection	Sewage	Water supply	Fire-fighting	Road maintenance	(N)
1995	0.715	0.535	1	0.360	1	1	(333)
1996	0.745	0.652	1	0.281	1	1	(363)
2000	0.739	0.940	1	0.326	1	0.648	(361)
2004	0.568	0.956	0.516	0.558	0.588	0.831	(310)
2008	0.547	0.984	0.397	0.462	0.608	0.870	(320)
2012	0.512	0.986	0.766	0.783	0.867	0.909	(121)
Total	0.657	0.842	0.780	0.461	0.844	0.876	(1808)
Panel II: Supporting services							
Year	Supporting services	Laundry services	Cleaning services	Catering services	(N)		
1995	0.286	0.488	0.272	0.621	(325)		
1996	0.282	0.477	0.187	0.525	(365)		
2000	0.171	0.391	0.200	0.356	(359)		
2004	0.325	0.692	0.500	0.678	(241)		
2008	0.504	1	0.378	0.517	(320)		
2012	0.501	1	0.764	0.813	(121)		
Total	0.322	0.674	0.383	0.585	(1731)		

Note: Each of the services has been coded 0 if it is provided in-house, and 1 if it is outsourced (which includes a company owned by the municipality, an inter-municipal company or a privately owned company). The aggregate infrastructure and supporting services indicators are operationalized as the share of services outsourced. If all services within a service type are missing, the aggregate indicator is coded missing. Otherwise, missing is coded 0 (in house provision). Note that the number of observations in 2012 is considerably lower (N=121) despite a relatively high response rate to the survey in that year (82%). This is due to the fact that many municipalities failed to fill out the relevant question on organizational choices. For further documentation, see “Kommunal Organisering 2012” (table 5.2), available in Norwegian at <http://www.nibr.no/filer/2012-21.pdf>

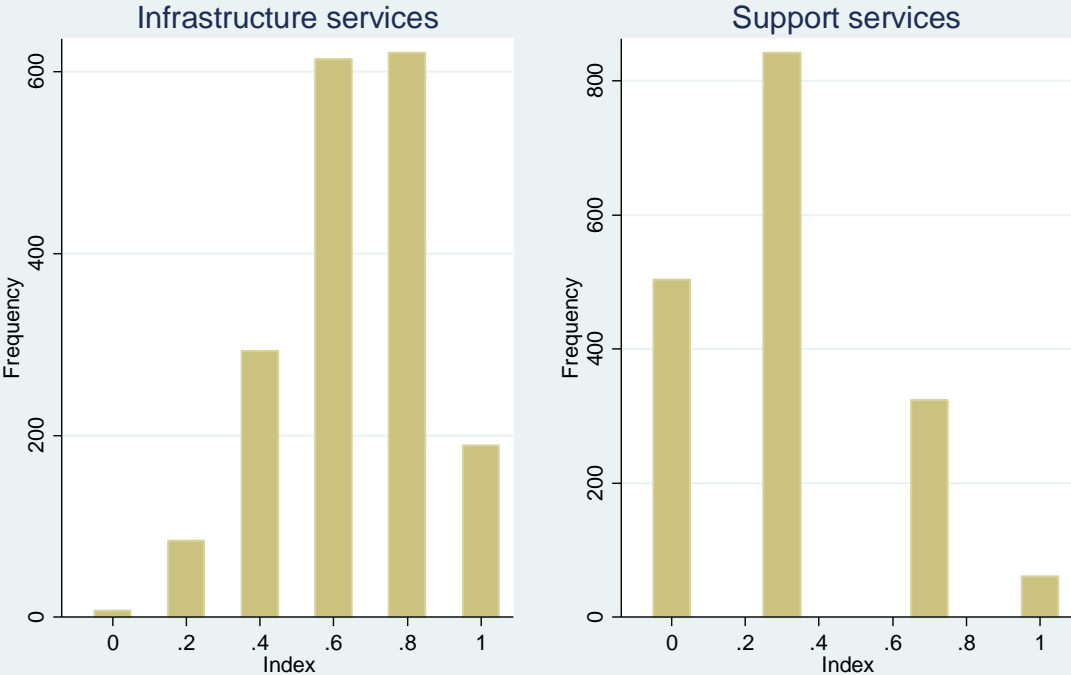
Table A2. Descriptive statistics for explanatory variables (averages)

Year	Population size	Settlement pattern	Share of children	Share of young	Share of elderly	Unemployment rate	Vote share right-wing parties	(N)
1995	9927	53.20	0.0931	0.117	0.169	0.0371	0.519	(422)
1996	9927	54.17	0.0937	0.116	0.168	0.0344	0.520	(428)
2000	10227	48.34	0.0783	0.134	0.166	0.0202	0.550	(429)
2004	10547	48.86	0.0743	0.139	0.160	0.0293	0.554	(428)
2008	10837	48.93	0.0683	0.138	0.162	0.0141	0.538	(424)
2012	11293	48.24	0.0670	0.129	0.167	0.0195	0.568	(419)
Total	10457	50.29	0.0791	0.129	0.166	0.0258	0.542	(2550)

Note: The demographic statistics come from the Norwegian Social Science Data Services, and are organized by Fiva et al. (2012). Settlement pattern refers to the share of population living in sparsely populated areas as defined by Statistics Norway. A densely populated (urban) area is defined as follows: “A hub of buildings is registered as an urban settlement if it is inhabited by at least 200 persons. The distance between the buildings must not exceed 50 meters. Exceptions are allowed for areas that cannot/are not to be occupied, for example parks, sport facilities, industrial areas or natural barriers such as rivers or arable land”. Further details can be obtained from Statistics Norway at <https://www.ssb.no/en/befolkning/statistikker/befsett/aar/2015-04-09?fane=om#content>

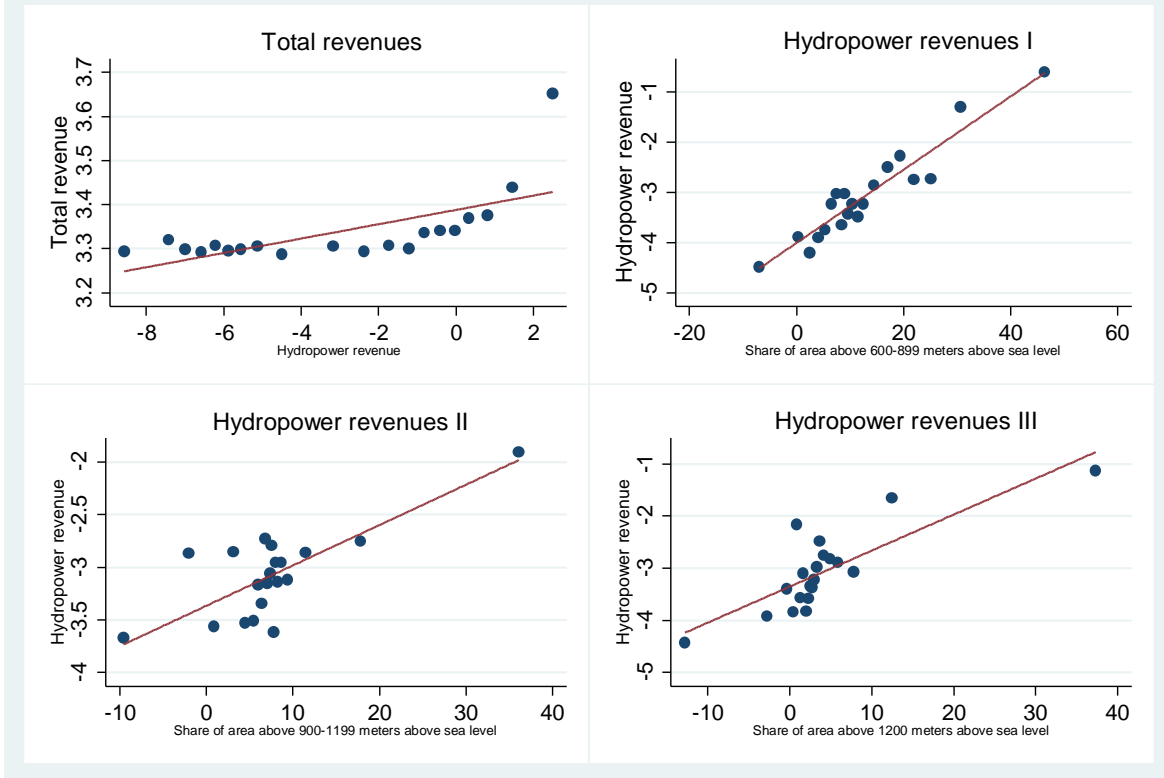
Appendix B: Additional figures

Figure B1. Frequency distribution of response variables



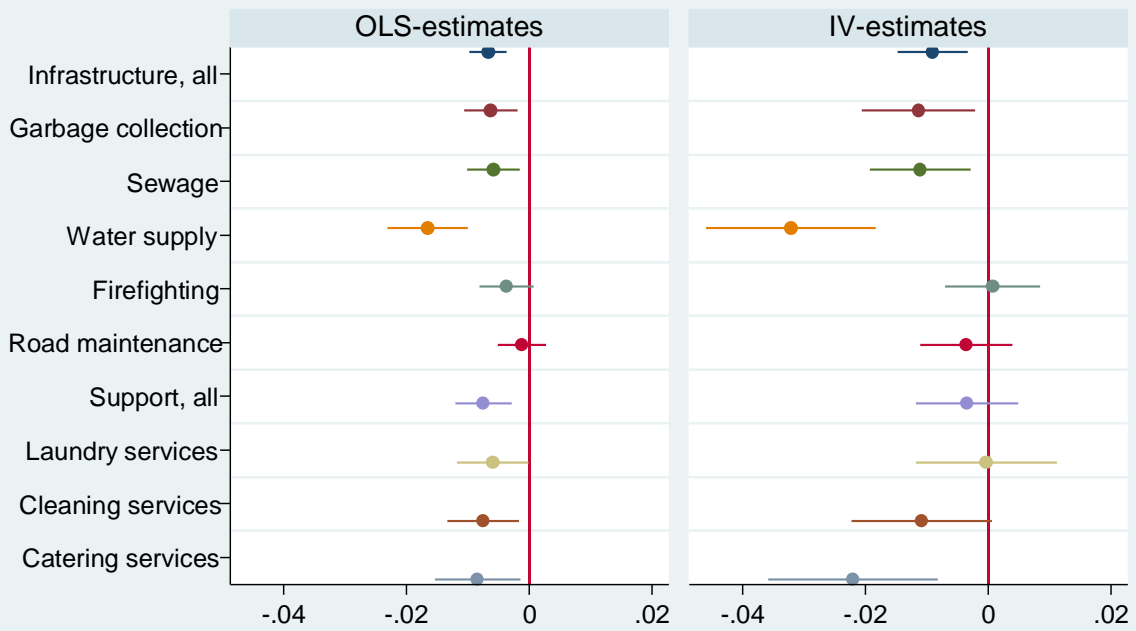
See main text for description of index definitions

Figure B2. Instrument variables



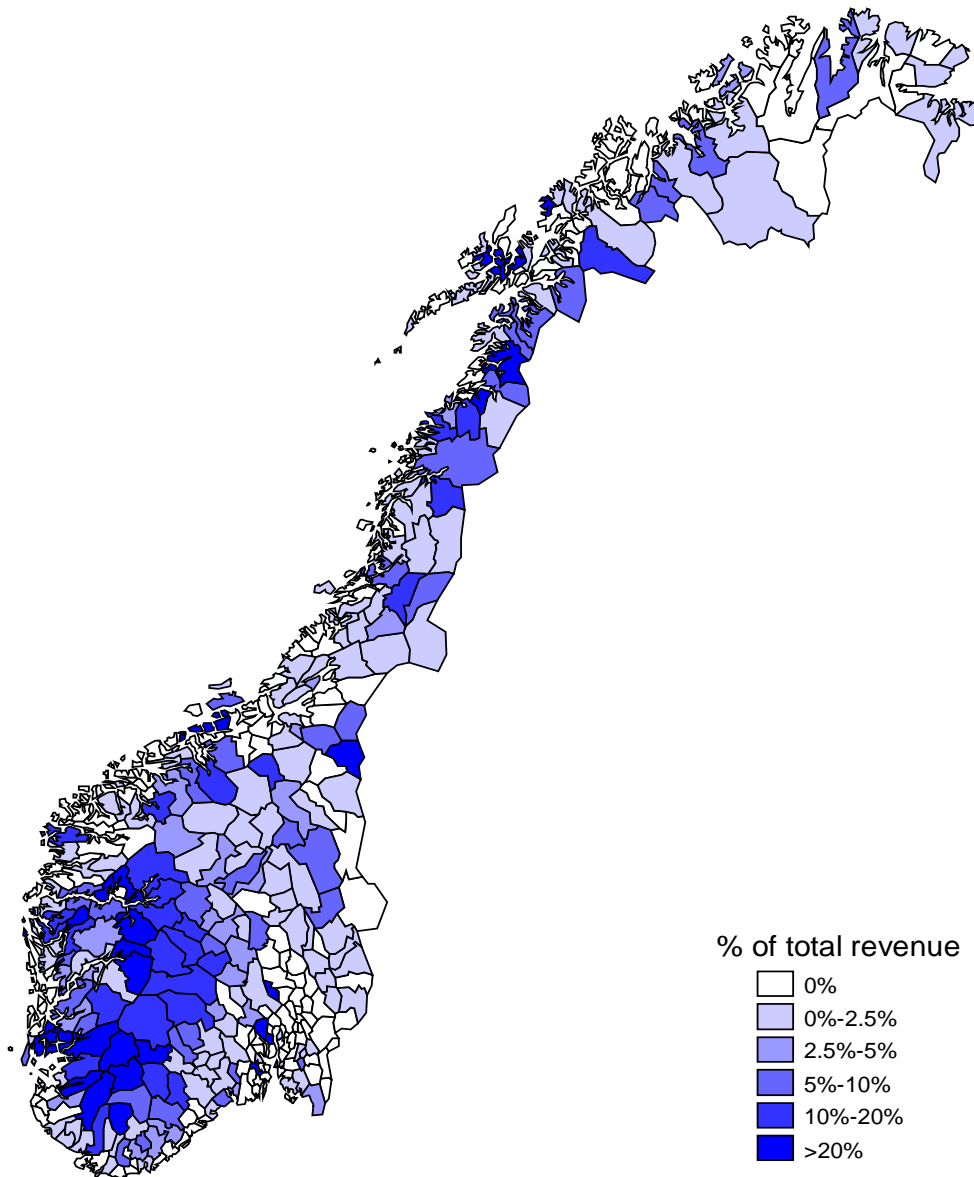
Note: The top left panel evaluates the correlation between hydropower revenues and total municipal revenues, which is required for the validity of hydropower revenues as an important source of revenue variation. The remaining three panels assess the validity of geographical variables as instruments for hydropower revenues, and illustrate that geography is indeed a strong driver of hydropower revenues. All panels present binned scatterplots covering all municipality-years, and a linear trend-line. Controls for year fixed effects, population size, settlement pattern, demographic and ideological variables, and the unemployment rate are included throughout. Total revenues in the figure are defined as the sum of municipal income and asset taxes, block grants and hydropower revenues. Hydropower revenues are defined as the sum of commercial property taxes and revenues for licensed sale of hydropower electricity production (denoted revenues from “konsesjonskraft”).

Figure B3. The impact of hydropower revenues on government outsourcing



The estimates derive from regression models with the same number of controls variables. The IV-estimates are based on geographical characteristics, i.e. share of area 600-899 meters above sea level, 900-1199 meters a.s.l., and 1200 meters or more a. s. l.

Figure B4. Hydropower revenues



Local government revenues from hydropower are defined as the sum of commercial property taxes and sales of hydropower electricity